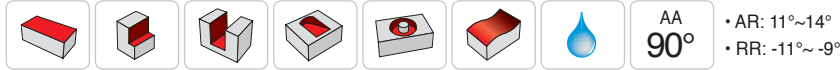
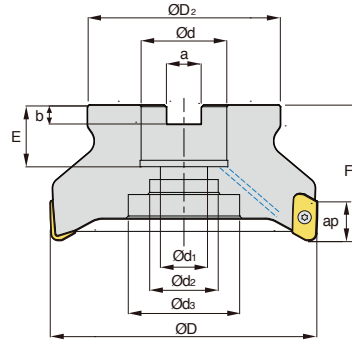
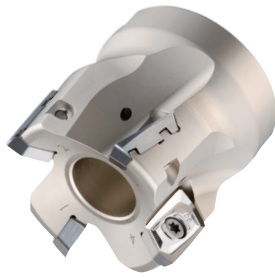


PAVCM-XD19



AA 90°
 • AR: 11°~14°
 • RR: -11°~-9°

(mm)

Designation	⚙️	ØD	ØD ₂	Ød	Ød ₁	Ød ₂	Ød ₃	a	b	E	F	ap	⚖️	
PAVCM	040R-16-3-XD19-A,B	3	40	34	16	9	13.5	-	8.4	5.6	16	45	17	0.17
	050R-22-4-XD19-A,B	4	50	42	22	11	18	-	10.4	6.3	21	50	17	0.35
	063R-22-5-XD19-A,B	5	63	42	22	11	18	-	10.4	6.3	21	50	17	0.53
	080R-27-5-XD19-A,B	5	80	60	27	14	20	-	12.4	7.0	24	50	17	0.88
	100R-32-6-XD19-A,B	6	100	70	32	18	26	42	14.4	8.0	25	63	17	1.72
	125R-40-7-XD19-A,B	7	125	90	40	22	32	52	16.4	9.0	29	63	17	2.82

- Type A uses Insert Nose R 0.4~3.2, and Type B uses Nose R 4.0 ~ 5.0
- When using a spindle at high speed, please check the balance of tool and use it after replacing with the new screw.

Available inserts

XDET-MA



Designation	Cermet										Coated										page
	CN2000	CN30	NCM325	NC5330	NCM535	NCM545	PC3600	PC3700	PC6510	PC9530	PC9540	PC5300	PC5400	PD1005	PD1010	Uncoated	H01	H05			
XDET	190504PEFR-MA																		●	E10	
	190508PEFR-MA																		●●		
	190512PEFR-MA																		●		
	190516PEFR-MA																		●●		
	190520PEFR-MA																		●		
XDET	190524PEFR-MA																		●	E10	
	190530PEFR-MA																		●●		
	190532PEFR-MA																		●		
	190540PEFR-MA																		●		
	190550PEFR-MA																		●		

Available arbors

Designation	Available arbors
PAVCM 040R-16-3-XD19	BT□□-FMC16-□□
050R-22-4-XD19	BT□□-FMC22-□□
063R-22-5-XD19	BT□□-FMC22-□□
080R-27-5-XD19	BT□□-FMC27-□□
100R-32-6-XD19	BT□□-FMC32-□□
125R-40-7-XD19	BT□□-FMC40-□□

Parts

Specification	Screw	Wrench
Ø40~Ø125	PTKA0408-A	TW 15S

Available inserts E10 Available arbors and bolt E400~E402

